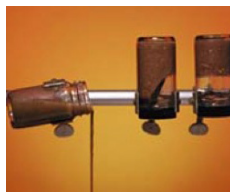
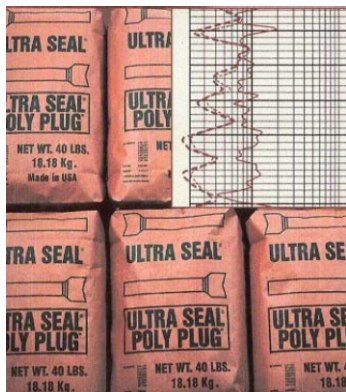


# CROSS LINKING TECHNOLOGY

## Enhance Drilling, Loss Circulation and Plug & Abandonment Functions

These non-biodegradable, density-controllable solutions can be weighted to 19.8 lb/gal or 2.36 specific gravity. Our cross-linking products can be mixed in seawater, NaCl, KCL and some formates, and is effective in temperatures over 350°F.



### POLY PLUG®

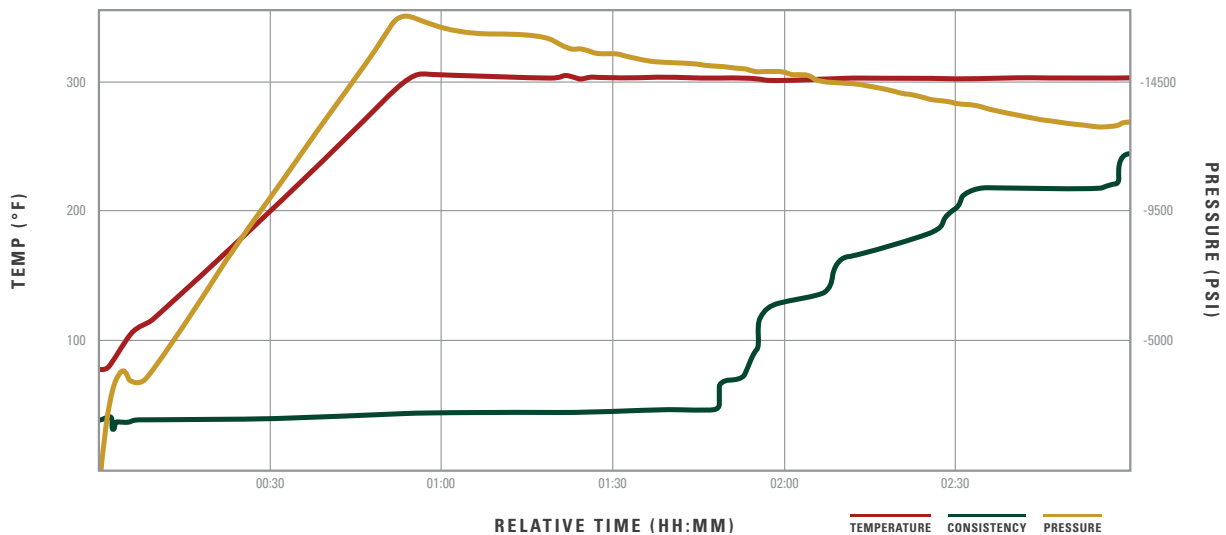
Poly Plug® is formulated with a high-molecular weight anionic polymer that produces a rigid, robust gel structure ideal for shutoff treatments into fractured, vugular and high permeability formations.

In addition to the polymer and cross-linking agent, a broad range of LCM (Ultra Seal® Plus) is included to slow seepage of the polymer solution into the formation.

### BENEFITS

- Total shut-off squeeze treatments that effectively seal off water or gas
- Effectively seals fractures, vugs, weak zones, flowing, over-pressured zones
- Single sack product, pre-blended for ease of mixing
- Can be mixed and placed with standard rig equipment or cement blender
- Can be pumped through the bit, mud motors and MWD/LWD tools
- Does not harden sufficiently to stick pipe or side-track, so there is never a drill out problem
- Insensitive to CO<sub>2</sub> or H<sub>2</sub>S
- Effective temperature range from 60°F to 350°F

SOLARIUM SOLUTIONS • LAKE HERMATIGE LLDSB#14





## POLY PLUG® CLEAR GEL

Used for drilling and workover applications, Poly Plug® Clear Gel can be mixed as either a high or a low molecular weight polymer. It is a temperature-activated, cross link polymer product, and can be retarded or accelerated to function within the wellbore BHT from 44.6°F to more than 350°F.

The only product of its kind on the market today, Clear Gel is used by more than 50 different operators for casing leaks, gravel pack consolidation, matrix permeability and perforation abandonments for plug downs.

## BENEFITS

- Works where cement doesn't
- Designed with a low viscosity prior to cross-linking to aid in injectivity
- Effective in full shut-off treatments into rock matrix less than 750 md
- Works by entering the reservoir and reducing permeability, not by simply plugging the perforation as in Portland cement treatments
- Never a drill-out problem, washes out of pipe for easy clean out
- Seals perforations in water zones

